

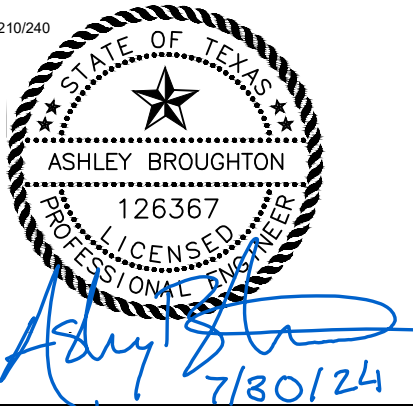
BID TABULATION FOR:

CONSTRUCTION OF WASTEWATER TREATMENT PLANT NO. 1 - PHASE 1
TO SERVE HARRIS COUNTY MUNICIPAL UTILITY DISTRICT NO. 558
HARRIS COUNTY MUNICIPAL UTILITY DISTRICT NO. 558
CITY OF HOUSTON E.T.J., HARRIS COUNTY, TEXAS
JULY 30, 2024
LJA ENGINEERING, INC.
S. YOUNG
JULY 30, 2024
2025-0028 (9.2)

BID OPENING DATE:
BID OPENING LOCATION:
TABULATION BY:
TABULATION DATE:
LJA JOB NO.

BIDDER'S NAME	TOTAL AMOUNT BID
1) HCG	\$932,140.00
2) 5J SERVICES, LLC	\$1,015,000.00

CALENDAR DAYS 210/240



I, ASHLEY BROUGHTON, P.E., hereby certify these bid tabulations to be true and correct.

LJA Engineering, Inc.

BID TABULATION FOR:

BID OPENING DATE:
BID OPENING LOCATION:
TABULATION BY:
TABULATION DATE:
LJA JOB NO.

CONSTRUCTION OF WASTEWATER TREATMENT PLANT NO. 1 - PHASE 1
 TO SERVE HARRIS COUNTY MUNICIPAL UTILITY DISTRICT NO. 558
 HARRIS COUNTY MUNICIPAL UTILITY DISTRICT NO. 558
 CITY OF HOUSTON E.T.J., HARRIS COUNTY, TEXAS
 JULY 30, 2024
 LJA ENGINEERING, INC.
 S. YOUNG
 JULY 30, 2024
 2025-0028 (9.2)

ITEM	DESCRIPTION	UNIT	QTY	1) HCG		2) 5J SERVICES, LLC	
				UNIT COST	TOTAL COST	UNIT COST	TOTAL COST
BASE BID ITEMS							
1	SITE WORK INCLUDING BUT NOT LIMITED TO SITE GRADING AND HYDROMULCH SEEDING, DRAINAGE, CONCRETE SIDEWALK, EQUIPMENT SLABS AND ALL REQUIRED APPURTENANCES, AS SHOWN ON PLANS, COMPLETE IN PLACE	LS	1	\$217,000.00	\$217,000.00	\$243,434.00	\$243,434.00
2	COORDINATION WITH EQUIPMENT PROVIDERS FOR INSTALLATION OF LEASED EQUIPMENT AND ALL ITEMS NOT PROVIDED BY EQUIPMENT PROVIDERS AS DESCRIBED IN EQUIPMENT PROVIDERS SCOPE OF SERVICES AND NOT COVERED IN SEPARATE BID ITEM (SEE EXHIBIT A, INCLUDED AFTER BID FORM) FOR A COMPLETE AND OPERATIONAL WWTP, COMPLETE IN PLACE	SY	1	\$5,000.00	\$5,000.00	\$75,000.00	\$75,000.00
3	CRUSHED CONCRETE FOUNDATION FOR TREATMENT UNITS AND EQUIPMENT, AS SHOWN ON PLANS, COMPLETE IN PLACE	LS	1	\$50,000.00	\$50,000.00	\$100,000.00	\$100,000.00
4	CONCRETE DUMPSTER PAD AND SUMP PUMP, INCLUDING 2" SCH. 40 PVC DRAIN LINE TO HEADWORKS, COMPLETE IN PLACE	LS	1	\$12,000.00	\$12,000.00	\$25,000.00	\$25,000.00
5	8" PIPE BOLLARD, COMPLETE IN PLACE	EA	11	\$700.00	\$7,700.00	\$1,200.00	\$13,200.00
6	8" FORCE MAIN, AWWA C900, DR-18, INCLUDING DUCTILE IRON PIPE FOR FORCE MAIN ABOVE GROUND, FITTINGS, EXCAVATION, BEDDING, BACKFILL, CONNECTION TO HEADWORKS, AND ALL APPURTENANCES, COMPLETE IN PLACE	LF	15	\$1,500.00	\$22,500.00	\$500.00	\$7,500.00
7	12" DUCTILE IRON PIPE, ALL DEPTHS, INCLUDING EXCAVATION, BEDDING, AND BACKFILL, COMPLETE IN PLACE	LF	15	\$450.00	\$6,750.00	\$600.00	\$9,000.00
8	12" REINFORCED CONCRETE PIPE OUTFALL, ALL DEPTHS, INCLUDING EXCAVATION, BEDDING, AND BACKFILL, COMPLETE IN PLACE	LF	85	\$245.00	\$20,825.00	\$250.00	\$21,250.00
9	TRENCH SAFETY SYSTEM, ALL DEPTHS, COMPLETE IN PLACE	LF	115	\$1.00	\$115.00	\$1.00	\$115.00
10	CONNECT PROPOSED FORCE MAIN TO PROPOSED FORCE MAIN (BY OTHERS), INCLUDES ALL NECESSARY APPURTENANCES, ADAPTORS AND CONNECTORS, OR STUB OUT AND PLUG, COMPLETE IN PLACE	LS	1	\$2,500.00	\$2,500.00	\$2,500.00	\$2,500.00
11	CONNECT PROPOSED OUTFALL PIPE TO EXIST INLET, INCLUDE ALL NECESSARY APPURTENANCES, ADAPTORS AND CONNECTORS, OR STUB OUT AND PLUG, COMPLETE IN PLACE	LS	1	\$2,500.00	\$2,500.00	\$3,000.00	\$3,000.00
12	CLARIFIER PANEL, BLOWER PANEL, NPW PANEL, AND ALL ASSOCIATED POWER/CONTROL TO MOTORS. COMPLETE IN PLACE	LS	1	\$9,000.00	\$9,000.00	\$40,000.00	\$40,000.00
13	15KVA LIGHTING TRANSFORMER AND NEW DISTRIBUTION PANEL WITH ALL ASSOCIATED CONDUIT CABLE, OUTLETS, LIGHTS AND MISC. LOADS. COMPLETE IN PLACE	LS	1	\$290,000.00	\$290,000.00	\$250,000.00	\$250,000.00
14	NEW 250KW DIESEL GENERATOR WITH SUBBASE FUEL TANK, ACCESS PLATFORMS AND ONBOARD PARALLELING CAPABILITY COMPATIBLE WITH EXISTING GENERATOR AND ALL ASSOCIATED CONDUIT/WIRE/CONTROLS AND TESTING OF PARALLELING SYSTEM. COMPLETE IN PLACE	LS	1	\$240,000.00	\$240,000.00	\$170,000.00	\$170,000.00
BASE BID ITEMS SUBTOTAL:					\$885,890.00		\$959,999.00
MISCELLANEOUS ITEMS							
1	STORM WATER POLLUTION PREVENTION PLAN, INCLUDING ADMINISTRATION, INSTALLATION, MAINTENANCE, AND REMOVAL AS REQUIRED BY THE PLANS AND AS DIRECTED BY THE ENGINEER, TO BE MAINTAINED UNTIL CONTRACTOR NOTICE OF TERMINATION IS SUBMITTED, COMPLETE IN PLACE	LS	1	\$7,000.00	\$7,000.00	\$2,500.00	\$2,500.00
2	INLET PROTECTION BARRIER, (TO BE USED ONLY AS DIRECTED BY THE ENGINEER), COMPLETE IN PLACE	EA	4	\$100.00	\$400.00	\$300.00	\$1,200.00

BID TABULATION FOR:

BID OPENING DATE:
BID OPENING LOCATION:
TABULATION BY:
TABULATION DATE:
LJA JOB NO.

CONSTRUCTION OF WASTEWATER TREATMENT PLANT NO. 1 - PHASE 1
TO SERVE HARRIS COUNTY MUNICIPAL UTILITY DISTRICT NO. 558
HARRIS COUNTY MUNICIPAL UTILITY DISTRICT NO. 558
CITY OF HOUSTON E.T.J., HARRIS COUNTY, TEXAS
JULY 30, 2024
LJA ENGINEERING, INC.
S. YOUNG
JULY 30, 2024
2025-0028 (9.2)

ITEM	DESCRIPTION	UNIT	QTY	1) HCG		2) 5J SERVICES, LLC	
				UNIT COST	TOTAL COST	UNIT COST	TOTAL COST
3	FILTER FABRIC FENCE, (TO BE USED ONLY AS DIRECTED BY THE ENGINEER), COMPLETE IN PLACE	LF	950	\$3.00	\$2,850.00	\$4.00	\$3,800.00
4	INSTALLATION, MAINTENANCE & REMOVAL OF STABILIZED CONSTRUCTION EXIT, (TO BE USED ONLY AS DIRECTED BY THE ENGINEER), COMPLETE IN PLACE	EA	1	\$1,800.00	\$1,800.00	\$1,000.00	\$1,000.00
5	INSTALLATION, MAINTENANCE & REMOVAL OF CONCRETE TRUCK WASHOUT, (TO BE USED ONLY AS DIRECTED BY THE ENGINEER), COMPLETE IN PLACE	EA	1	\$1,200.00	\$1,200.00	\$1,000.00	\$1,000.00
6	CONTROL OF GROUNDWATER AND SURFACE WATER AS NEEDED FOR CONSTRUCTION, COMPLETE IN PLACE	LS	1	\$2,000.00	\$2,000.00	\$1.00	\$1.00
7	EXTRA CRUSHED CONCRETE FOR FOUNDATION (TO BE USED ONLY AS DIRECTED BY THE ENGINEER), COMPLETE IN PLACE	SY	50	\$40.00	\$2,000.00	\$100.00	\$5,000.00
8	EXTRA CEMENT STABILIZED SAND (TO BE USED ONLY AS DIRECTED BY THE ENGINEER), COMPLETE IN PLACE	CY	50	\$38.00	\$1,900.00	\$50.00	\$2,500.00
9	EXTRA HYDROMULCH SEEDING, (TO BE USED ONLY AS DIRECTED BY THE ENGINEER), COMPLETE IN PLACE	AC	1	\$2,600.00	\$2,600.00	\$3,000.00	\$3,000.00
10	EXTRA 4000 PSI CONCRETE WITH REINFORCING STEEL, (TO BE USED ONLY AS DIRECTED BY THE ENGINEER), COMPLETE IN PLACE	CY	50	\$450.00	\$22,500.00	\$500.00	\$25,000.00
11	PROVIDE WATER TO PERFORM CLEAR WATER TEST OF TREATMENT UNITS (TO BE USED ONLY AS DIRECTED BY THE ENGINEER), COMPLETE IN PLACE	LS	1	\$2,000.00	\$2,000.00	\$10,000.00	\$10,000.00
MISCELLANEOUS ITEMS SUBTOTAL:					\$46,250.00	\$55,001.00	
<u>BIDDING SUMMARY</u>							
SUBTOTAL BASE BID ITEMS					\$885,890.00	\$959,999.00	
SUBTOTAL MISCELLANEOUS ITEMS					\$46,250.00	\$55,001.00	
TOTAL AMOUNT BASE BID					\$932,140.00	\$1,015,000.00	

